

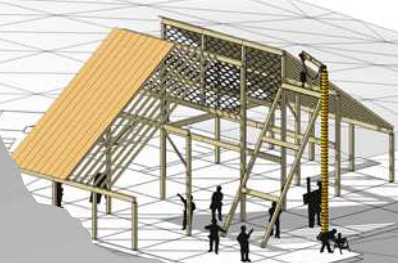
The building plan configuration would offer flexibility for community activities in support of the Centre's activities

## Energy conservation



An efficient plan shape, low wall to floor ratio and a highly insulated roof for passive energy conservation

## Kit of parts



## On site generation

Lake bed slinky heat pump

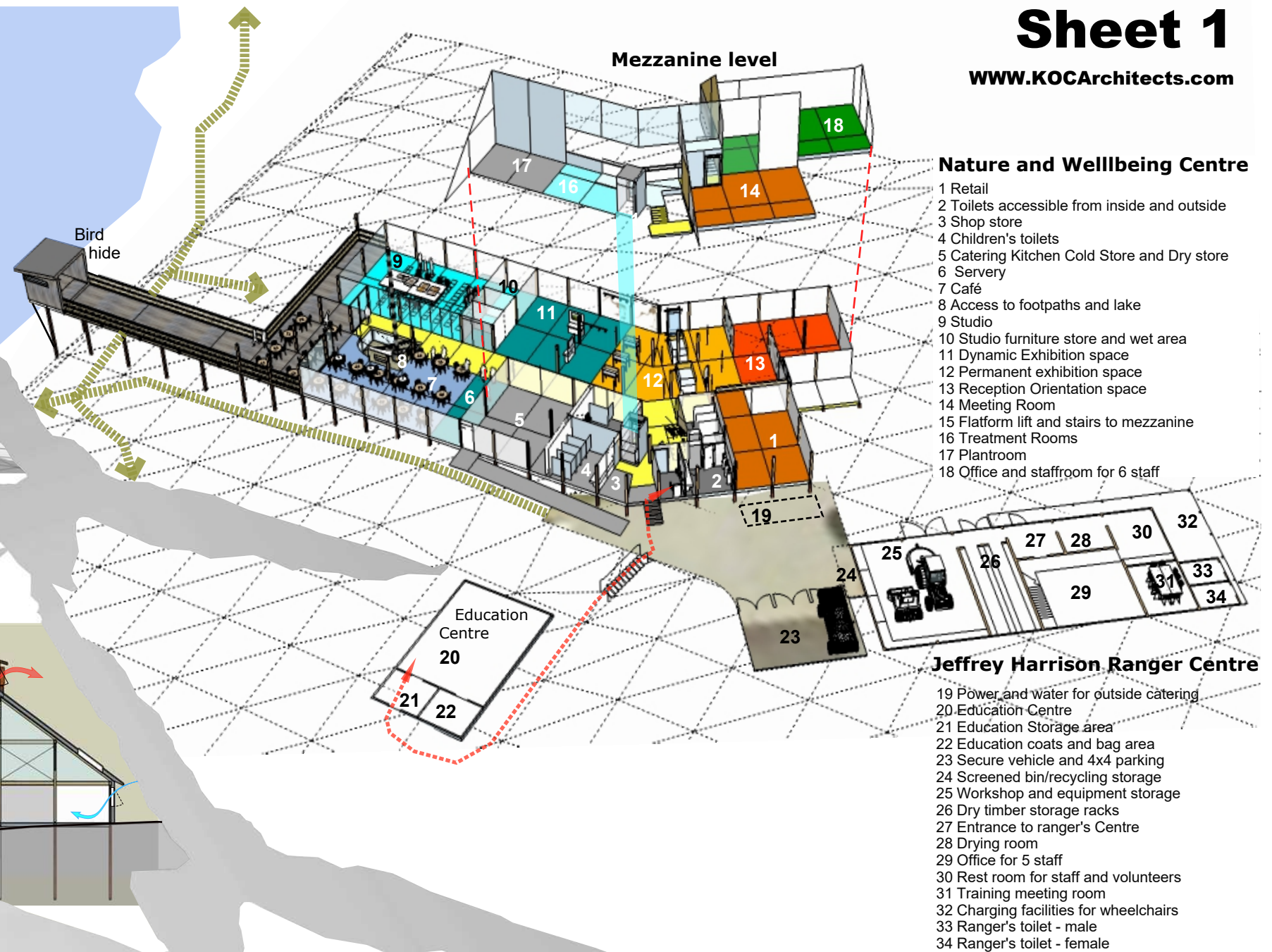
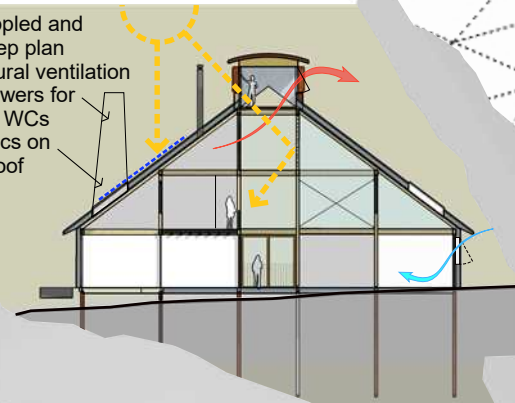


Water wheel generator in Darent

Photovoltaics on south east facing roof

## Environmental control

Lantern allows dappled and diffuse light in deep plan  
Stack effect natural ventilation  
Ventilation towers for kitchen and WCs  
Photovoltaics on Sth/East roof



Café with Project Room to right



The entrance area and orientation space are warm embracing spaces to welcome the visitor. They lead to a progression of spaces, at first giving glimpses of distant views around the bend in the circulation route before opening up to the full height brightly lit spaces. The sequence would culminate with dramatic views of the wildlife centre and lake from the terrace or from the bird hide at the end of the jetty

Exhibition space with Treatment rooms on mezzanine





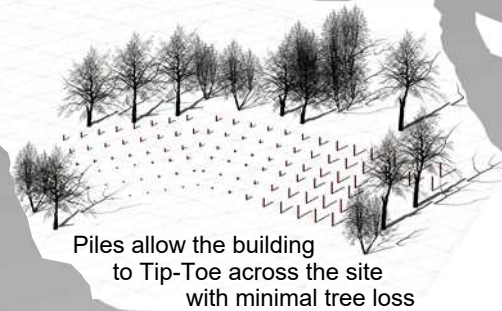
The design is inspired by **Biophilic** Design principles, which place nature, natural systems and wellbeing at the heart of the design process

The building is conceived as a lightweight pre-fabricated timber structure set on piles close to existing trees, to minimize disturbance to site contours and ecology

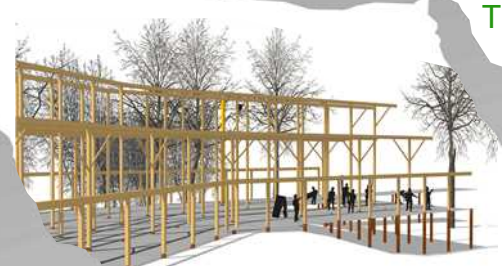
The Nature and Wellbeing Centre would be sited on the ridge of the hill commanding views over the lake and wildlife below

The existing landscape is charming and mature. We propose to retain all the existing buildings, roads, and paved areas, taking nothing away, but using all the available budget and scarce resources on new facilities to enhance the visitor experience

The new building would compliment the "Jeffery Harrison Ranger Centre" and the mature trees to provide a welcoming enclosure and sense of place. Natural materials and vernacular forms enhance links with the site and locality



Piles allow the building to Tip-Toe across the site with minimal tree loss



Lightweight pre-fabricated construction reduces damage to ecology

View over lake

Elevated view point



Touchdown

Direct connection with existing pathways



Direct access to wildlife

Budget

We have taken the budget constraints seriously designing an inherently efficient and cost effective form with self-finished natural materials



Sheet 1

WWW.KOCArchitects.com

Bird hide overlooking east lake  
Lake at 65 M contour

Potential location for outdoor natural play area

Centre at 72 M contour

Tadorna Education Centre with access to main building

Secure parking area

Re-purpose Jeffery Harrison Visitor Centre as Ranger facility

Disabled Parking  
Car recharging

Retain the Elemental Garden

Old quarry haul road could provide well compacted waiting for coaches away from entrance

50 cars on gravel along access road

50 cars on existing grass overspill area



Terrace overlooking lake

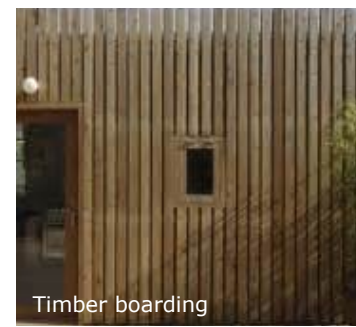


Timber panelling



Terracotta

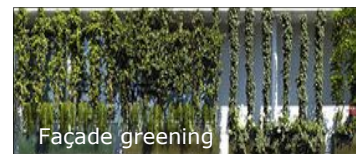
Bugs



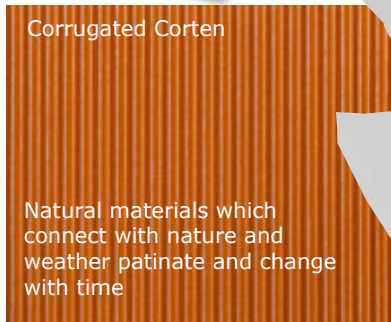
Timber boarding



Glue-lam timber



Façade greening



Corrugated Corten

Natural materials which connect with nature and weather patinate and change with time



Scale steps down to greet visitor