

Kennedy O'Callaghan Architects

www.kocarchitects.com info@kocarchitects.com 020 7253 6600



The Etches Collection - Museum of Jurassic Marine Life, Kimmeridge, Dorset

Value: Construction cost £2,434,000

Completion date: October 2016

Client: The Kimmeridge Trust

Brief description of Project

A new-build museum and village hall in a Conservation Area and an Area of Outstanding Natural Beauty next to listed buildings

Services provided

Full architectural service - RIBA Stages 1-7

HLF

The project was granted £2.8M by the HLF

Interpretation

The exhibition designers and architects worked together from Stage 1 to develop orientation, way-finding and interpretation concepts. The fossil gallery ceiling is a projection screen for computer generated images that bring the fossils to life. The room dimensions, height and pitch of the ceiling were coordinated with the display early in the design process, and the glass wall opens onto the collector's workshop. The form of the building respects the local vernacular whilst enhancing interpretation

Education

The Clore Learning Centre provides a flexible education space which doubles as a village hall. It has ample support accommodation and storage to provide flexibility. The space is used primarily by school groups in term-time, doubling as a lecture theatre, cinema or conference space. It is used as a village hall for assembly, parties and village dances. It is equipped with full AV, an induction loop and a furniture hoist and is supported by a kitchen and wet learning area.

We visited a range of Clore Learning centres when refining the brief and we were mentored by Gilian Wolfe CBE of The Dulwich Picture Gallery.

The Wolfson Education Room provides further facilities for education and community groups and doubles as an introductory space, showing a short film.

The education spaces open onto terraces for informal outdoor learning activities to suit the Learning Plan

Sensitive setting

The site is in a Conservation Area and the village is in an area of Outstanding Natural Beauty, requiring sensitive, contextural design. We collaborated with Purbeck District Council and we selected locally sourced stone to complement the local vernacular

Architects

Kennedy O'Callaghan, Janie Price

Awards /publications

CABE winner Best New-build 2017

LABC Awards 2017: Highly Commended

Smithsonian Magazine listed it as one of the twelve new museums to visit in 2016.

Featured on BBC Countryfile 2016



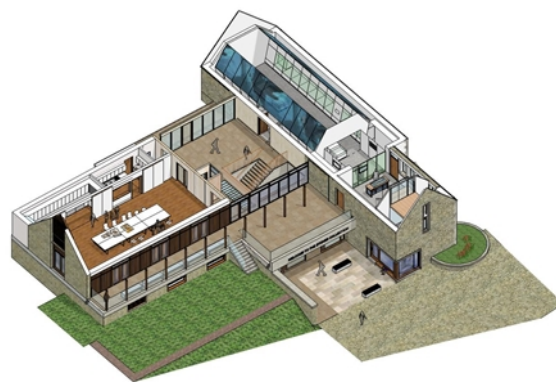
The fossil gallery - The collection is displayed in cases with interactive touch screens. CGIs of the extinct marine creatures are projected on screens to simulate a Jurassic sea. The gallery has a glass wall to allow a full view of the collector's workshop



Clore Learning Centre as education space



Clore Learning Centre as lecture theatre



Cut-away upper ground floor



Cut-away lower ground floor



The building is faced in Purbeck stone from a nearby quarry, to complement the village setting